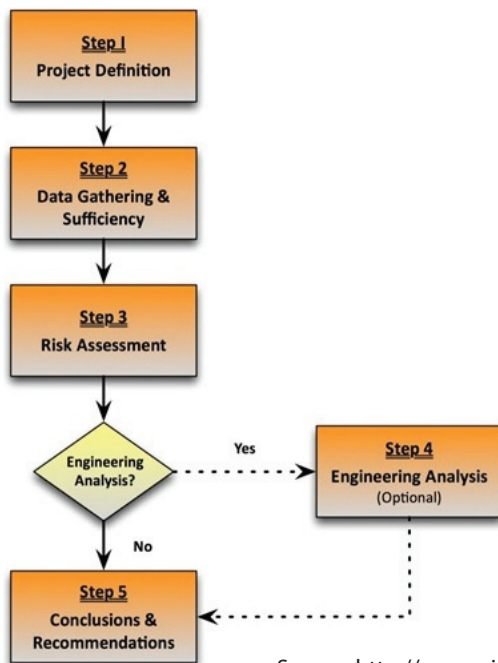


The PIEVC Protocol: Adapting Infrastructure to a Changing Climate

Thursday February 25th | 8:20 - 5:00pm

What is the PIEVC Protocol?

Engineer's Canada has developed the **PIEVC (Public Infrastructure Engineering Vulnerability Committee) Protocol** to serve as a step-by-step methodology of risk assessment and optional engineering analysis of climate change impacts on infrastructure. **It offers a framework to support decision-making on infrastructure operation, maintenance, planning and development.**



What does this mean for Planning?

The Protocol gathers information and data, which are then used to understand relevant climate effects and their predicted interactions with infrastructure. The PIEVC Protocol can be used as both an engineering and planning tool for **meaningful incorporation of climate change science into land use and community planning.**

Planners serve an essential role on the assessment team while also being able to apply the recommendations of the risk assessment to inform other planning processes. **This is one more tool for planners to consider in understanding and implementing climate change adaptation in their work.**

Join us!

In collaboration with Engineers Canada and APEGBC, the Planning Institute of B.C. (PIBC) South Coast Chapter is pleased to offer the **The PIEVC Protocol Session - Informing Collaborative Planning and Engineering Decision Making** to Planners and Engineers for a full day of knowledge sharing and collaborative learning on the PIEVC Protocol!

Case studies, provided by presenters from a number of leading agencies, will be explored to inform our community resiliency and adaptability decision making skills.

We look forward to seeing you there!

Register Online Now!

www.cvent.com/d/1fq08d

\$120 PIBC & APEGBC Members | \$175 Non-Members | \$60 Students
6.5 CPD Learning Units

Thursday February 25th 2016 | 8:20 - 5:00pm | Oceanic Plaza - 1035 West Pender Street